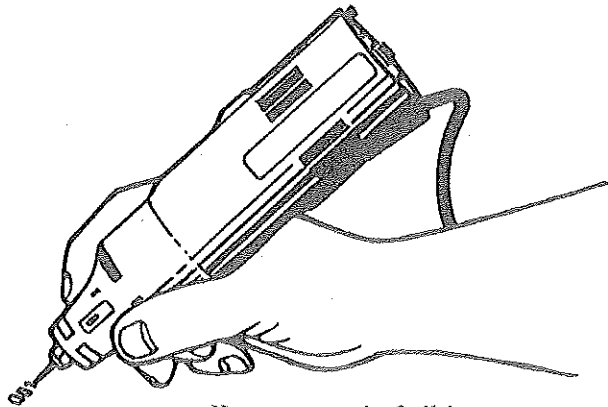


PROPERTY IDENTIFICATION

PROTECTS YOUR VALUABLES

Engrave your B.C. Drivers' licence number on a non-removable part of each item of value in your home.



Keep a record of all items you mark on your household inventory card.

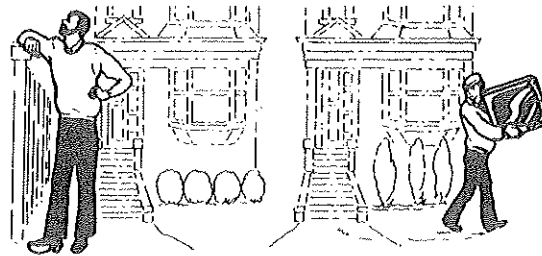


Working together to prevent crime.

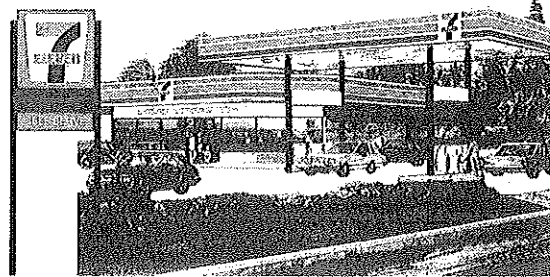
BE RESPONSIBLE

As a member of the community your responsibility for its protection and safety does not end at your property line. No one can guard themselves and their property all the time...neighbours need each other.

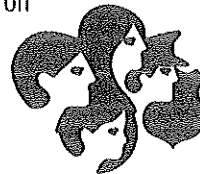
It only requires a commitment of 8 hours of volunteered time to organize your neighbours. This includes your training as well as the time required to hold a get-together with your neighbours. **JOIN BLOCK WATCH.**



Block Watch depends on businesses as well as neighbours helping each other.



As part of your neighbourhood 7-Eleven is very proud to provide you with this pamphlet about the Block Watch Program. Block Watch will assist you on the reduction/deterrence of crime in your neighbourhood now and in the future. Be a part of the program; help yourself and your neighbours.



BLOCK WATCH

1-877-602-3358



Block Watch[®]
www.blockwatch.com

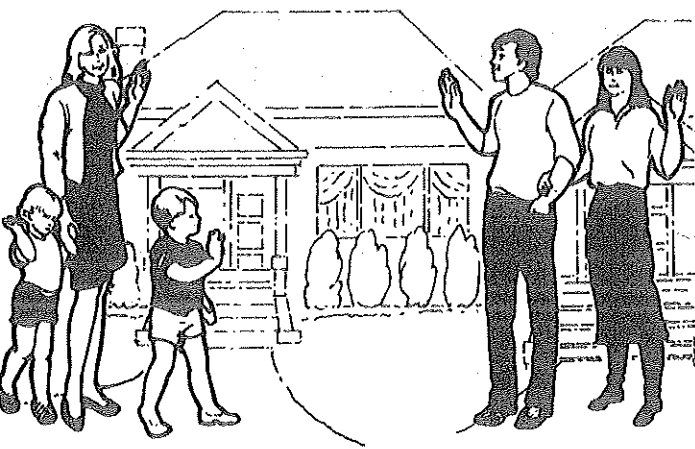
**A WATCHFUL
NEIGHBOUR IS YOUR
BEST BURGLAR ALARM**

**CONTACT YOUR LOCAL POLICE
DEPARTMENT FOR MORE INFORMATION.**

WHAT IS BLOCK WATCH?

A free program operated by your police to help prevent crime in your community.

HOW DOES BLOCK WATCH WORK?



Block Watch is a neighbour helping a neighbour. Families on a block form a communication chain aided by a block map of names, telephone numbers and addresses. They watch out for each others homes and report suspicious activities to the police and each other to reduce the likelihood of residential crime.

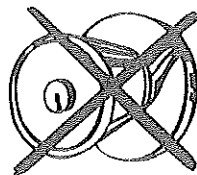
BLOCK WATCH ALSO PROVIDES:

- Tips on how to better secure your home.
- Information on how to mark your property.
- Protective window stickers.
- Crime prevention strategies for your area through a free newsletter.

IMPROVE YOUR HOME SECURITY

HOW SAFE IS YOUR HOME?

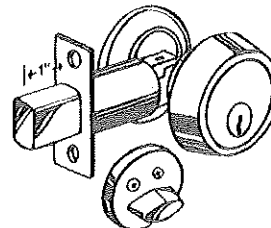
A substantial number of burglaries are committed by non-professionals who rely on easy entry to your home.



Do not rely on typical door latches!!



Install 1 inch throw deadbolt



- Are your door locks adequate?
- Is your strike plate (mounted on door frame) reinforced with a 2-inch or 3-inch screw?
- Do you have secondary locks on all windows rather than just simple catches provided by the builder or manufacturer?
- Do you know where all the keys are to your home and office?
- When you leave home, even for a short time, do you lock all doors and windows, including any outside shed or garage?

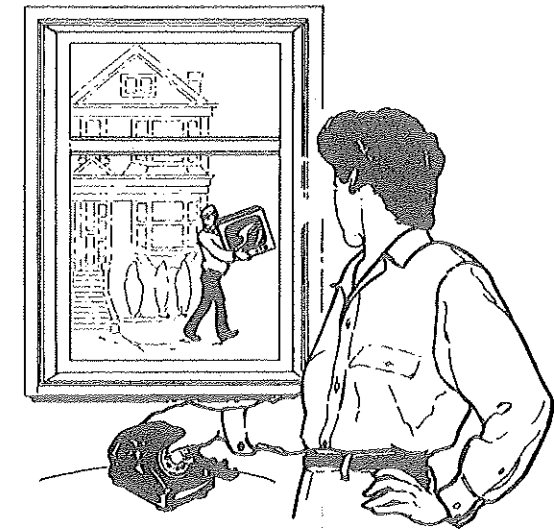
BURGLARS

DON'T LIKE TO BE SEEN

- Do you make your home look and sound occupied when you are away?
- Leave lights on at night; use timers to your advantage.

REPORT SUSPICIOUS ACTIVITIES

Consider someone may be coming into your area to commit a crime. For example:



- Unfamiliar persons loitering in your neighbourhood.
- Slow moving vehicles that circle the block or unfamiliar parked vehicles... especially if someone remains in them.
- Unusual noises, screams, glass breaking, barking dogs, etc.
- Persons going from door to door. (Especially back doors).
- Persons looking in parked cars.

**DON'T ASSUME SOMEONE ELSE HAS CALLED THE POLICE...
THREE CALLS RECEIVED ARE BETTER THAN NO CALLS AT ALL.**